



[WWW.KOMODOADVENTUREDIVETRAVEL.COM](http://WWW.KOMODOADVENTUREDIVETRAVEL.COM)

# KLM. ALORE

PHINISI BOAT



# BOAT SPECIFICATION

## TYPE OF VESSEL :

Phinisi Schooner

## FLAG :

Indonesia

## PLACE OF ORIGIN :

Tanah Beru,  
Sulawesi Selatan, Indonesia

## LENGTH :

37,49 meters

## BREADTH :

7,15 meters

## MATERIALS :

Ironwood, bitti wood,  
teak wood

## BUILT :

2022

## SPEED :

7-10 Knots

## NAVIGATION AND SAFETY TOOLS :

- Radar MRD-103
- GPS N430
- AIS SI-70A
- Echo Sounder CUS-126
- VHF Radio MC-M37
- SSB Radio IC-M710
- Handy Talky IC-M37
- E.P.E.R.B VEB 8
- Compass Magnetic
- Clinometer
- Satellite Phone Thuraya
- 4 Life Raft
- 100 Life Jacket
- 2 Dinghy 50PK
- 4 Parachute Signal
- 4 Life Buoy
- 19 Fire Extinguishers
- Smoke Detectors
- Binocular

## NUMBER OF GUEST :

Max 16 persons

## GUEST CABIN :

7 Cabins AC, en-suite bathroom

## MAIN ENGINE :

8DC9 Mitsubishi  
350 HP / 220 RPM

## AUXILIARY ENGINE :

80 KVA, 42,5 KVA, 22,5 KVA

## FUEL TANK CAPACITY :

9.000 L

## WATER MAKER :

1.000 L / Day

# ACCOMMODATION & FACILITIES

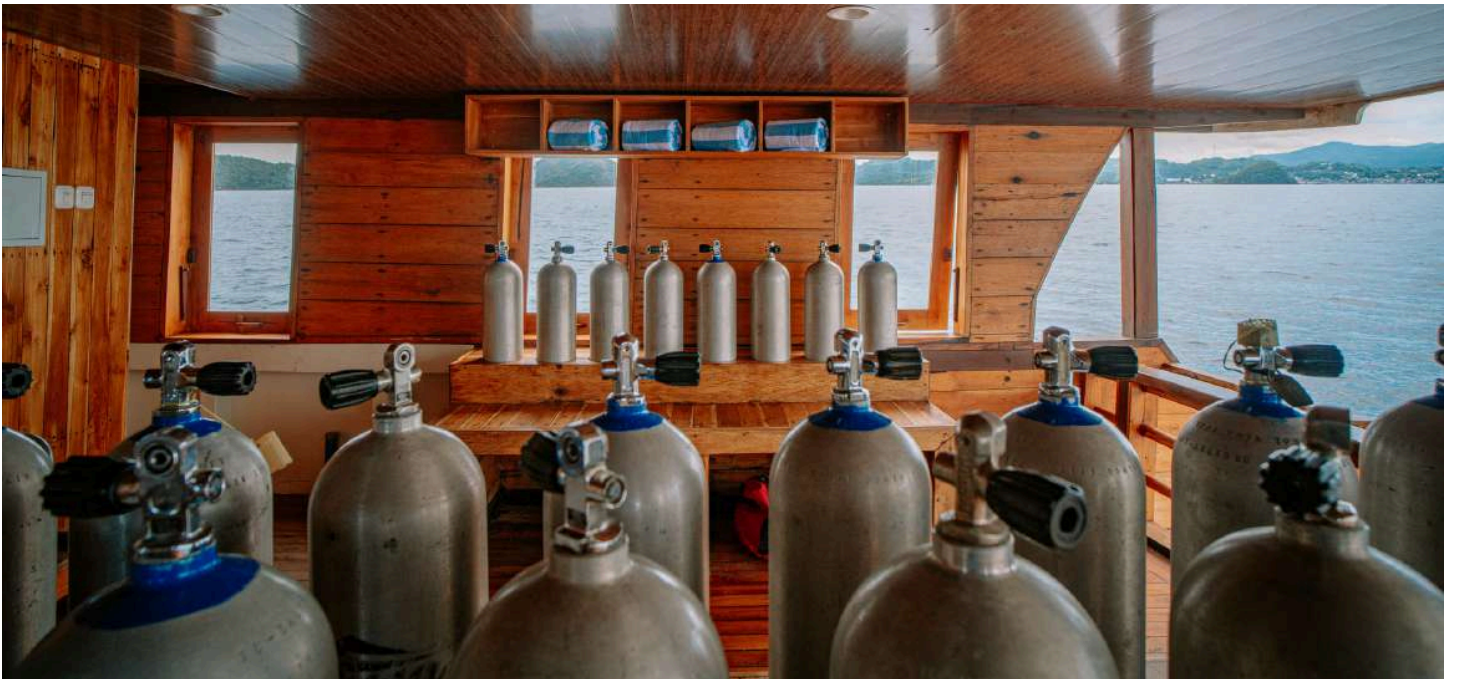
## FEATURE :

- Audio & video entertainment
- Aircon cabins
- Aircon living room
- Non-diver (snorkeler) friendly
- Camera Room
- Library
- Sun deck
- Leisure deck
- Diving Deck
- En-suite bathrooms
- Hot/cold water showers
- Electrical sockets in all cabins, all bathrooms and living room
- Outdoor and indoor dining
- Tender boat
- Paddle board and canoe

## DIVE EQUIPMENT & FACILITY :

- Breathing air compressor
- Scuba Tank Din or Yok Valve 80 cuft
- Weight, Weight belt
- Tender for Diving
- Rinse Hoses
- Gear Rental
- Dive Deck Platform
- Camera Room

# DIVING AREA



# OUTDOOR AREA



# INDOOR AREA





# UPPER DECK - CABIN 1





## UPPER DECK - CABIN 2





## UPPER DECK - CABIN 3



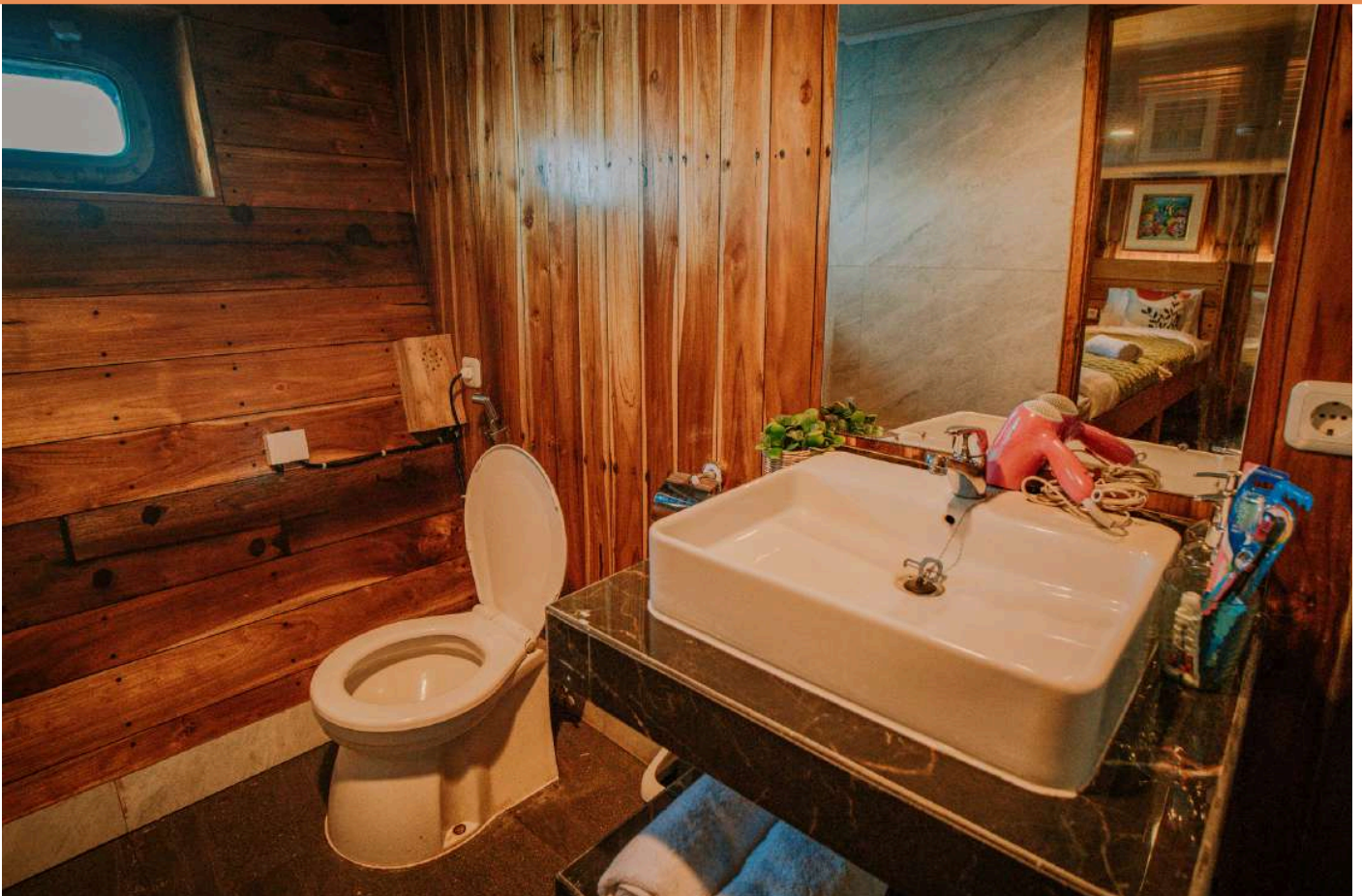


## LOWER DECK - CABIN 4





## LOWER DECK - CABIN 5





## LOWER DECK - CABIN 6





## LOWER DECK - CABIN 7



# ITINERARY LEISURE

## KOMODO NATIONAL PARK

### DAY 1

Padar Island  
Komodo Island  
Pink Beach  
Labuan Bajo

### 2D1N

Kelor Island  
Menjerite Island  
Rinca Kalong

Padar Island  
Pink Beach  
Komodo Island  
Labuan Bajo

### 3D2N

Kelor Island  
Menjerite Island  
Rinca Kalong

Padar Island  
Pink Beach  
Komodo Island  
Taka Makassar  
Manta Point

Sebayur Island  
Kanawa / Bidadari  
Island  
Labuan Bajo

### 4D3N

Kelor Island  
Menjerite Island  
Rinca Kalong

Padar Island  
Pink Beach  
Komodo Island

Taka Makasar  
Manta Point  
Gili Lawa Darat

Sebayur Island  
Kanawa / Bidadari  
Island  
Labuan Bajo

# ITINERARY DIVING

## KOMODO NATIONAL PARK

### DAY 1

Arrival – Labuan Bajo (L/D) Upto 3x Dives

- Pickup Airport/Hotel
- Transfer To Vessel - Sebayur
- Mini Wall
- Night Dive.

### DAY 2

Komodo National Park (B/L/D) Upto 4x Dives

- Crystal Rock
- Castle Rock
- Cauldron
- Night Dive.

### DAY 3

Komodo National Park (B/L/D) Upto 4x Dives

- Trekking Padar Island
- Padar Bay
- 3 Sister
- Pilarsteen
- Night Dive

### DAY 4

Central Komodo - Labuan Bajo (B/L) Upto 3x Dives / 2x Dives + Komodo Dragon Tour

- Batu Bolong
- Makasar Reef
- Wainilu Or Komodo Dragon Tour (Rinca)
- Transfer To Hotel
- See You Next Trip

\*Itineraries, times, dive sites and number of dives are subject to change due to weather and sea conditions, availability of safe anchorage, government regulations, dive skill, special requests or circumstances and other factors, Every effort will be made to carry out the program as planned.

# PRICE LIST

LEISURE LIVEBOARD - PRIVATE CHARTER  
(KOMODO NATIONAL PARK AREA)

## PACKAGES

2D1N

3D2N

4D3N

5D4N

6D5N

7D6N

1 Day

1 - 8 person

IDR 80.000.000

IDR 108.000.000

IDR 136.000.000

IDR 170.000.000

IDR 204.000.000

IDR 238.000.000

9 - 12 person

IDR 89.000.000

IDR 120.000.000

IDR 152.000.000

IDR 190.000.000

IDR 228.000.000

IDR 266.000.000

13 - 16 person

IDR 97.000.000

IDR 132.000.000

IDR 168.000.000

IDR 210.000.000

IDR 252.000.000

IDR 294.000.000

IDR 95.000.000 (max. 35 person)

1x Lunch & 2 snacks

DIVING LIVEBOARD - PRIVATE CHARTER  
(KOMODO NATIONAL PARK AREA)

## PACKAGES

3D2N

4D3N

5D4N

6D5N

7D6N

8D7N

9D8N

10D9N

1 - 8 person

IDR 139.500.000

IDR 186.000.000

IDR 232.500.000

IDR 279.000.000

IDR 325.500.000

IDR 372.000.000

IDR 418.500.000

IDR 465.000.000

9 - 12 person

IDR 148.500.000

IDR 198.000.000

IDR 247.500.000

IDR 297.000.000

IDR 346.500.000

IDR 396.000.000

IDR 445.500.000

IDR 495.000.000

13 - 16 person

IDR 157.500.000

IDR 210.000.000

IDR 262.500.000

IDR 315.000.000

IDR 367.500.000

IDR 420.000.000

IDR 472.500.000

IDR 525.000.000

## INCLUDED

- Transfer in/out from hotel/airport Labuan Bajo – harbor
- Cabin Ac, Ensuite Bathroom & Amenities
- Fullboard meals 3x/day, Evening Snack 1x/day, Free Flow Mineral Water, Tea & Coffee
- Local Guide
- Snorkeling Gears
- Excursion / Land Visit / Hopping Island
- Upto 4x dives/day, Dive Guide, Tank, Weights/weight belt (diving only)

## EXCLUDED

- Entrance Fee Komodo National Park
- Local Government Entrance Fee Komodo Island / Rinca Island
- Ranger Komodo Island / Rinca Island
- Flight ticket domestic or International
- Hotels and meals before and after the vessel
- Travel insurance & Dive Accident Insurance
- Alcoholic drinks, Personal expenses
- Crew gratuities
- Dive equipment rental (other than dive cylinders, weights and weight belt)
- Documentation
- Others

Komodo National Park Only : Embarkation (check-in) start from 07.00AM, and disembarkation (check-out) before 05.00PM