



ESCAPE
liveaboard



WWW.KOMODOADVENTUREDIVETRAVEL.COM

Adishree Phinisi

Step aboard the exquisite Adishree Phinisi, a true marvel of craftsmanship. With a capacity to accommodate 20 adventurous souls for a day trip and 10 lucky voyagers for a liveaboard experience, this ship promises intimate encounters with Indonesia's enchanting landscapes. Cabins Fit for Royalty: Sink into blissful slumber in the lavish 1 Master cabin with a double bed on the Upper Deck, or find camaraderie in 2 triple bed cabins on the Lower Deck. For those seeking privacy, our 2 double bed cabins on the Lower Deck are the perfect haven.



CLEANLINESS, HEALTH, SAFETY
ENVIRONMENTAL SUSTAINABILITY



BOAT SPECIFICATION

Years of build	: 2015 and Launch in May 2016
Lenght	: 25 Meter
Width	: 6,50 Meter
Cruising Speed	: 6 - 7 Knots
Water Capacity	: 6000 Liters
Fuel Capacity	: 3000 Liters
Main Engine	: Mitsubishi 6D22
Navigation	: Garmin GPS
Communications	: Marine radio, VHF radio
Crew	: 8 Crew
Capacity	: 20 Persons for one day trip and 12 persons for overnight guests

SAFETY EQUIPMENT



Life vests



First aid



Life raft



Life bouys



Fire extinguisher



Lifeboat / Speedboat



Marine Radio

CABIN INFORMATION Room Type (5 Cabins)

1 x Master Cabin (Upper Deck)
Queen Bed 160 x 200
Private Bathroom

2 x Triple Bed Cabin (Lower Deck)
1x Queen Bed (160 x 200)
1x Single Bed (90 x 200)
Private Bathroom

2 x Double Bed Cabin (Lower Deck)
1x Queen Bed (160 x 200)
Private Bathroom

Each of 5 cabins are Equipped with ensuite bathrooms, amenities, water heater, and air conditioning.



FACILITIES



Starlink satellite internet connection



Scuba tanks & compressor



Snorkeling gear



Canoe & paddle boards



Bean bag & lazy chair



Entertainment game



Sun deck area & rooftop



Indoor & outdoor dining room



Refrigeration & showcase



Chef on board



Water Heater



Amenities



Sofa lounge area



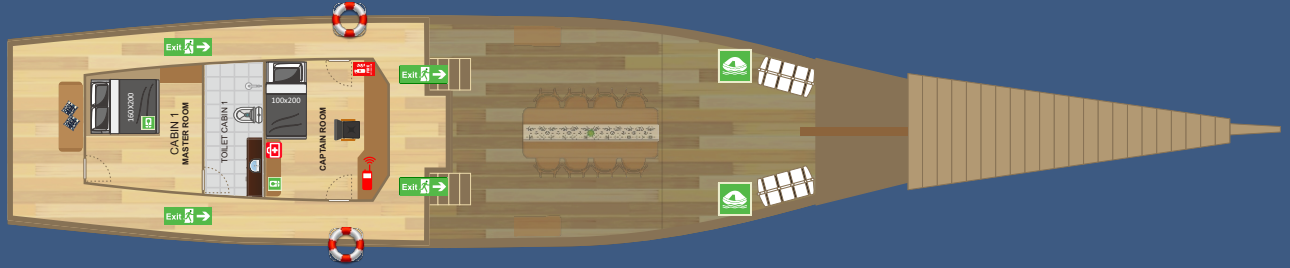
Karaoke area



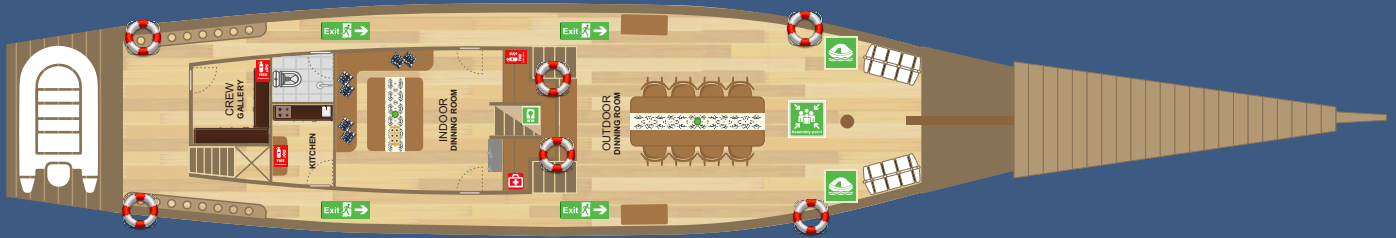
SAFETY PLAN ADISHREE



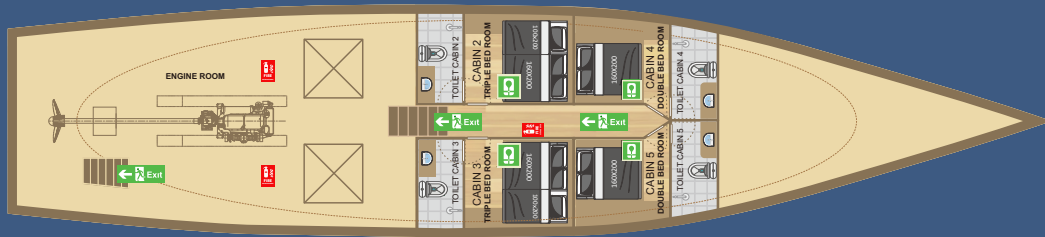
ESCAPE
liveboard



UPPER DECK



MAIN DECK



LOWER DECK



CLEANLINESS, HEALTH, SAFETY
ENVIRONMENTAL SUSTAINABILITY



Emergency
Escape Hatch



Life Jacket



Life Raft



Assembly
Point



EPIRB
on the sundeck



SART



Flare set
VHF Walkie
Talky



First Aid



Life Ring



Fire
Extinguisher



Master Cabin

 2 Pax



Queen Bed



Private Bathroom



Amenities



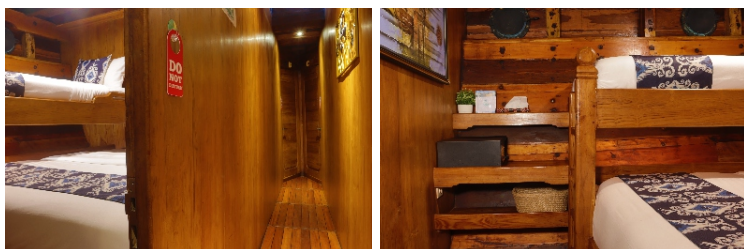
Plugs



Air Conditioner



Cabinet Table



Triple Bed Cabin

 3 Pax



Queen Bed + Single Bed



Private Bathroom



Amenities



Plugs



Air Conditioner



Storage

Double Bed Cabin 2 Pax



Queen Bed



Private Bathroom



Amenities



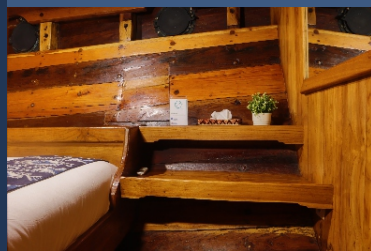
Plugs



Air Conditioner



Storage



Andamari Phinisi

The opulent Andamari Phinisi, a masterpiece on the waves, offers a day trip extravaganza for up to 25 souls and a liveaboard escapade for up to 12 fortunate travelers. Prepare to be awestruck by the comfort and elegance that this vessel offers. A Haven of Comfort: Indulge in the lap of luxury with 2 double rooms on the 3rd deck and 4 twin bed cabins on the first deck, all complete with air conditioning, ensuite bathrooms, and invigorating hot water.



**CLEANLINESS, HEALTH, SAFETY
ENVIRONMENTAL SUSTAINABILITY**



BOAT SPECIFICATION

Years of build	: 2019 and Launch in June 2019
Lenght	: 30 Meter
Width	: 7,95 Meter
Cruising Speed	: 8-10 Knot
Water Capacity	: 4000 Liters & Water Maker
Fuel Capacity	: 9000 Liters
Main Engine	: Mitsubishi 8DC11
Navigation	: Garmin GPS
Communications	: Marine radio, VHF radio
Crew	: 10 Crew
Capacity	: 25 Persons for one day trip and 12 persons for overnight guests

SAFETY EQUIPMENT



Life vests



First aid



Life raft



Life bouys



Fire extinguisher



Lifeboat / Speedboat



Marine Radio

CABIN INFORMATION Room Type (6 Cabins)

2 x Master Cabin (Upper Deck)
Queen Bed 160 x 200
Private Bathroom

4 x Twin Cabin (Lower Deck)
2x Single Bed (100 x 200)
Private Bathroom

Each of 5 cabins are Equipped with ensuite bathrooms, amenities, water heater, and air conditioning.



FACILITIES

 Starlink satellite internet connection

 Scuba tanks & compressor

 Snorkeling gear

 Canoe & paddle boards

 Sofa lounge area

 Bean bag & lazy chair

 Entertainment game



Indoor & outdoor dining room



Refrigeration & showcase



Water Heater



Chef on board



Amenities



Sundeck area & Rooftop



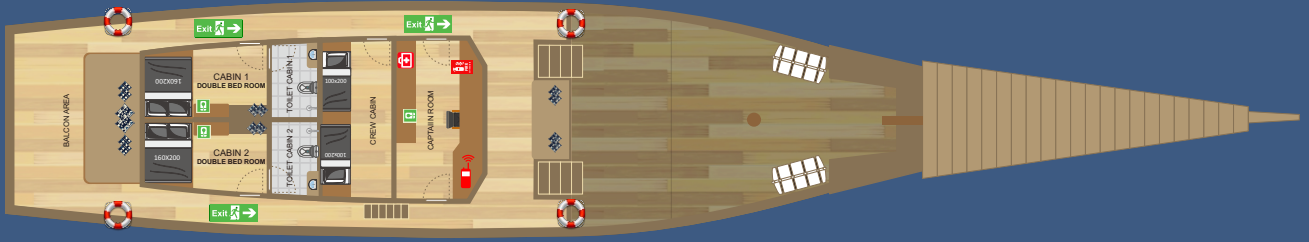
Karaoke area



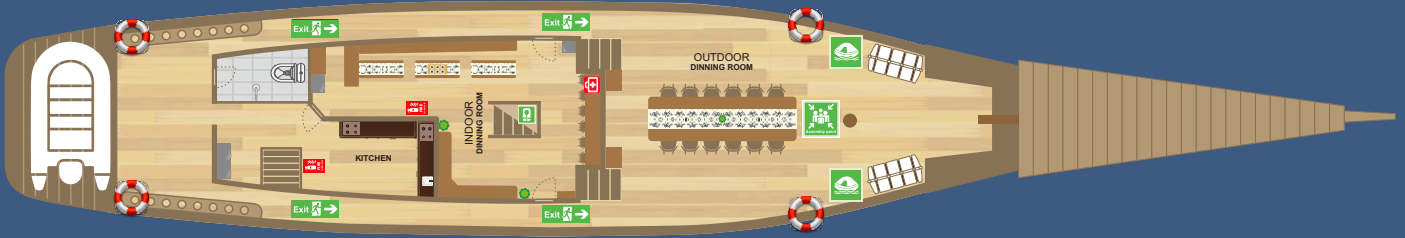
SAFETY PLAN ANDAMARI



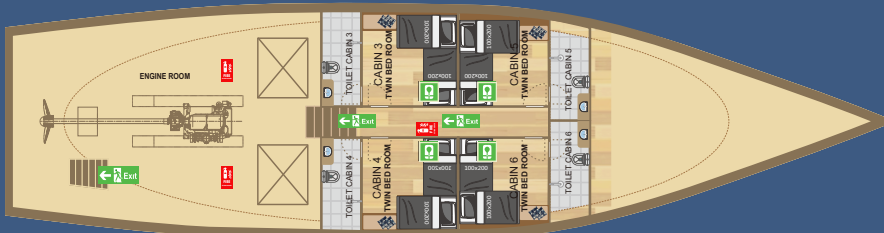
ESCAPE
liveboard



UPPER DECK



MAIN DECK



LOWER DECK



CLEANLINESS, HEALTH, SAFETY
ENVIRONMENTAL SUSTAINABILITY



Emergency
Escape Hatch



Life Jacket



Life Raft



Assembly
Point



EPIRB
on the sundeck



SART



Flare set
VHF Walkie
Talky



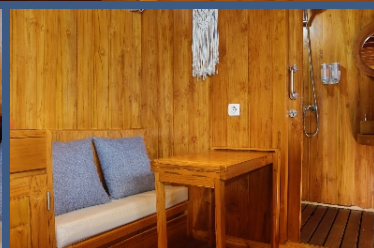
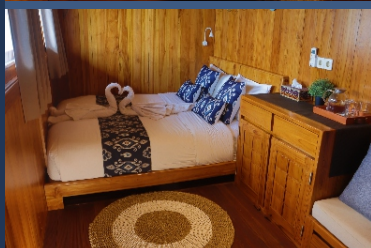
First Aid



Life Ring



Fire
Extinguisher



Master Cabin

 2 Pax



Queen Bed



Private Bathroom



Amenities



Sofa & working desk



Plugs



Air Conditioner



Cabinet Table



Twin Bed Cabin

 2 Pax



2 x Single Bed



Private Bathroom



Amenities



Sofa & cushion



Plugs



Air Conditioner



Storage



ESCAPE
liveaboard

LEISURE within Komodo National Park (TNK)

KOMODO
NATIONAL PARK



DIVING within Komodo National Park (TNK)

KOMODO
NATIONAL PARK



We are a private charter boat and offer a variety of available and custom trip packages for leisure and diving purpose, including:

- One Day Trip 3 Destinations Komodo National Park (TNK)
- One Day Trip 4 Destinations Komodo National Park (TNK)
- Overnight Program Start from 2 Days 1 Night within Komodo National Park
- Overnight Program Start from 2 Days 1 Night outside Komodo National Park

The itinerary is based on your clients needs, desires, and budget, this is a customize trip. However we are more than happy to propose our own itinerary. If you have any questions, comments, or concerns, feel free to leave a comment on this proposal!

Trip Overview

Based in Flores, specifically Labuan Bajo, a full list of destinations including Komodo island, Rinca, the Pink Beach and surrounding islands of interest is on offer. Set sail for Lombok or Maumere and explore the islands along the route could be another option.

Leisure Program
ITINERARY
EXAMPLE

2 Days
1 Night

DAY 1

- Kelor Island
- Manjerite
- Kalong Island

DAY 2

- Padar Island
- Pink Beach
- Komodo Island

3 Days
2 Nights

DAY 1

- Kelor Island
- Manjerite
- Kalong Island

DAY 2

- Padar Island
- Pink Beach
- Komodo Island
- Manta Point
- Taka Makassar

DAY 3

- Siaba Island
- Kanawa Island
- Back to LBJ

Diving Program
ITINERARY
EXAMPLE

7 Days
6 Nights

DAY 1

- Sebayur Kecil

DAY 2

- Cristal Rock
- Castel Rock
- The Shotgun
- Gili Lawa Darat

DAY 3

- South Batu Bolong
- Manta Point
- North Batu Bolong
- Siaba Besar

DAY 4

- Three Sister
- Pilaarsteen
- Tanjung Loh Sera
- Teluk Loh Sera

DAY 5

- Manta Alley
- German Flag
- Tata Island

DAY 6

- Tatawa Kecil
- Turtle Place
- Rinca
- Kalong

Day 7 : Back To LBJ

**PRICELIST ADISHREE PHINISI****Leisure / Diving *within* Komodo National Park (TNK)**

ONE DAY TRIP:

1. EXCLUDE DINNER ON BOARD (max:20 pax)= Rp56.100.000
2. INCLUDE DINNER ON BOARD (max:20 pax)= Rp63.800.000

PROGRAM	LEISURE			DIVING		
	1 - 4 Pax	5 - 8 Pax	9 - 12 Pax	1 - 4 Pax	5 - 8 Pax	9 - 12 Pax
2 D 1 N	60.885.000	67.650.000	70.650.000	106.200.000	118.000.000	123.000.000
3 D 2 N	71.100.000	86.900.000	89.900.000	132.750.000	147.500.000	152.500.000
4 D 3 N	99.900.000	122.100.000	127.100.000	153.900.000	171.000.000	176.000.000
5 D 4 N	133.200.000	162.800.000	167.800.000	205.200.000	228.000.000	238.000.000
6 D 5 N	166.500.000	203.500.000	208.500.000	247.000.000	275.000.000	285.000.000
7 D 6 N	199.800.000	244.200.000	249.200.000	297.000.000	330.000.000	340.000.000

Price in Rupiah**PRICELIST ANDAMARI PHINISI****Leisure / Diving *within* Komodo National Park (TNK)**

ONE DAY TRIP:

1. EXCLUDE DINNER ON BOARD (max:25 pax)= Rp70.000.000
2. INCLUDE DINNER ON BOARD (max:25 pax)= Rp80.500.000

PROGRAM	LEISURE			DIVING		
	1 - 4 Pax	5 - 8 Pax	9 - 12 Pax	1 - 4 Pax	5 - 8 Pax	9 - 12 Pax
2 D 1 N	75.600.000	84.000.000	87.000.000	120.600.000	134.000.000	139.000.000
3 D 2 N	100.800.000	112.000.000	115.000.000	150.750.000	167.500.000	172.500.000
4 D 3 N	145.800.000	162.000.000	167.000.000	175.500.000	195.000.000	200.000.000
5 D 4 N	194.400.000	216.000.000	221.000.000	234.000.000	260.000.000	270.000.000
6 D 5 N	234.000.000	260.000.000	265.000.000	283.500.000	315.000.000	325.000.000
7 D 6 N	280.000.000	312.000.000	317.000.000	340.200.000	378.000.000	388.000.000

Price in Rupiah



PRICELIST ADISHREE PHINISI

Leisure / Diving **OUTSIDE** Komodo National Park (TNK)

PROGRAM	LEISURE		DIVING	
	1 - 6 Pax	7 - 12 Pax	1 - 6 Pax	7 - 12 Pax
2 D 1 N	99.000.000	110.000.000	118.800.000	132.000.000
3 D 2 N	123.750.000	137.500.000	148.500.000	165.000.000
4 D 3 N	148.500.000	165.000.000	178.200.000	198.000.000
5 D 4 N	198.000.000	220.000.000	237.600.000	264.000.000
6 D 5 N	247.500.000	275.000.000	297.000.000	330.000.000
7 D 6 N	297.000.000	330.000.000	356.400.000	396.000.000

Price in Rupiah



PRICELIST ANDAMARI PHINISI

Leisure / Diving **OUTSIDE** Komodo National Park (TNK)

PROGRAM	LEISURE		DIVING	
	1 - 6 Pax	7 - 12 Pax	1 - 6 Pax	7 - 12 Pax
2 D 1 N	122.400.000	136.000.000	144.000.000	160.000.000
3 D 2 N	153.000.000	170.000.000	180.000.000	200.000.000
4 D 3 N	183.600.000	204.000.000	216.000.000	240.000.000
5 D 4 N	244.800.000	272.000.000	288.000.000	320.000.000
6 D 5 N	306.000.000	340.000.000	360.000.000	400.000.000
7 D 6 N	367.200.000	408.000.000	432.000.000	480.000.000

Price in Rupiah

* Prices are subject to change without prior notice

* More days and night program are available

* Optional tour price is available upon request



PRICE INCLUDES:

- Local transfers in & out from hotel / airport Labuan Bajo - Harbor.
- Free flow mineral water, coffee and tea.
- Selected soft drinks.
- 3 x delightful meals per day (For overnight guests)
- 2 x refreshments per day.
- Tour Guide
- Snorkeling equipment.
- Dive Master for diving program.
- Tank and belt for diving program.
- 3 x dives per day for diving program.

PRICE EXCLUDES:

- Entrance fee of Komodo National Park
- Guide/Ranger fee for Komodo National Park
- Diving equipment
- Alcoholic drinks and personal expenses
- Crew gratuities